



OUTLAST™

GASTRIC SUPPORT SUPPLEMENT

FORMULATED TO SUPPORT GASTRIC HEALTH & PROPER pH

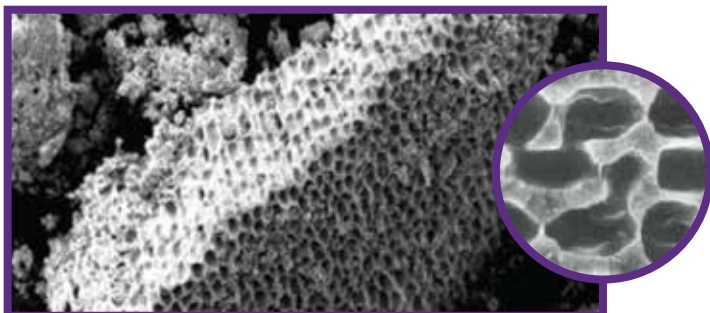
- Supports **GASTRIC HEALTH** for optimal performance
- Designed to **SUPPORT PROPER pH** in stressful situations
- FLEXIBLE FEEDING** as a snack or top-dressed

It is estimated that up to 90% of active horses experience gastric discomfort, affecting health, attitude, and performance. Support your horse's gastric health and comfort by adding Outlast™ supplement to your feeding program.

Testing in a simulated gastric environment shows Outlast™ supplement:

- ACTS FASTER**
- LASTS LONGER**
- OUTPERFORMS**

Outlast™ supplement contains a proprietary mineral complex with a unique honeycomb structure. The porous structure of this natural and bio-available source of calcium and magnesium increases its surface area and enhances its capacity to support proper gastric pH.



Electron microscope images showing the porous structure of the proprietary mineral complex

Designed to Support Gastric Balance

Purina's PhD Equine Nutritionists have spent hundreds of hours (and counting) researching Outlast™ supplement at our state-of-the-art nutrition research farm in Missouri

520 / **7**

PhD Research Hours

Field-tested & Horse-approved

As part of our rigorous testing process, hundreds of performance horses around the country participated in our nutrition research

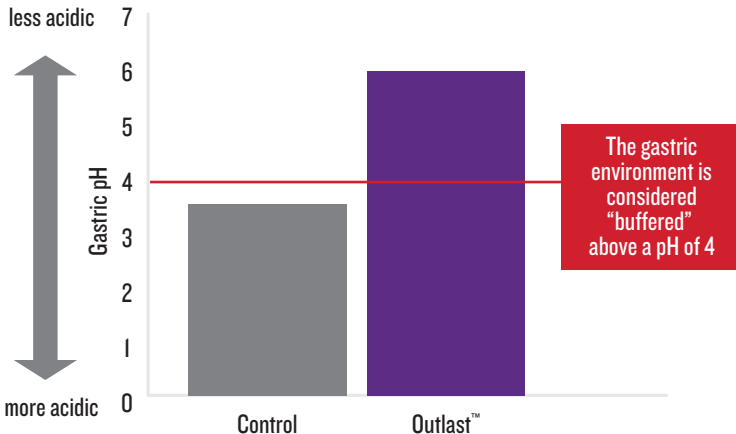
95492

Outlast Supplement Feedings

Purina® Outlast™ Gastric Support Supplement was developed™ by our PhD Equine Nutritionists to support a healthy gastric environment. Take a look at what makes Outlast™ supplement unique:

Equine gastric pH is less acidic in horses supplemented with Outlast™ supplement

GASTRIC pH 2 HOURS AFTER SUPPLEMENTATION

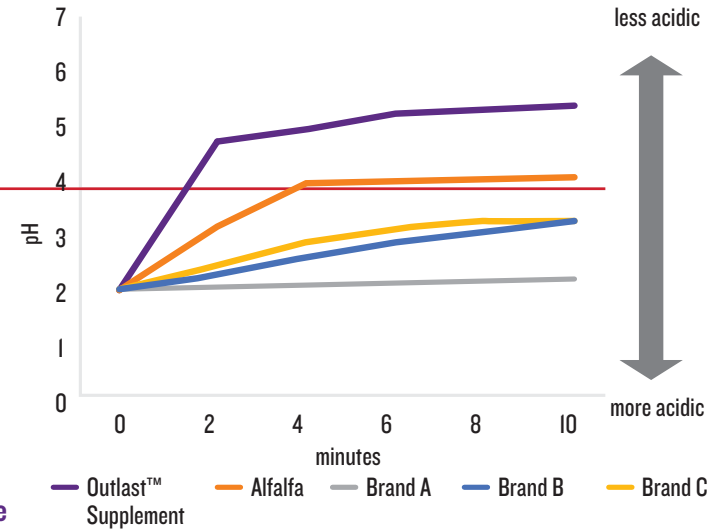


*The Control supplement and Outlast™ supplement contained similar nutrient profiles.

To learn more about the research behind Outlast™ supplement and the Purina® Equine Gastric Health Program, visit www.FeedOutlast.com.

Outlast™ supplement buffers faster and to a higher pH than other products on the market

BUFFERING SPEED IN A SIMULATED GASTRIC ENVIRONMENT



Amounts of Outlast™ Supplement to Feed per Top-dress at Meals and/or Snack(s)

Horse Bodyweight (lbs)	Supplement (g by weight)	Number of Cups* per Meal or Snack
500–750	100	0.75
750–1,000	150	1.00
1,000–1,250	200	1.25
1,250–1,500	250	1.50
1,500–1,750	300	1.75
1,750–2,000	350	2.00

*Standard 8-oz. kitchen measuring cups when measured by volume.

Guaranteed Analysis:

Crude Protein (Min)	13.00 %
Crude Fat (Min)	1.10 %
Crude Fiber (Max)	17.00 %
Acid Detergent Fiber (ADF) (Max)	21.00 %
Neutral Detergent Fiber (NDF) (Max)	35.00 %
Calcium (Ca) (Min)	4.00 %
Calcium (Ca) (Max)	5.00 %
Phosphorus (P) (Min)	0.45 %

The proprietary ingredient in Purina® Outlast™ Gastric Support Supplement conforms to the rules of competition and racing when fed as directed.

Feeding Directions:

- This product is designed to be top-dressed on your horse's regular feed ration and/or fed as a "snack" within one hour prior to engaging in a potentially stressful event such as exercise, traveling, confinement, etc.
- The feeding rate for both the top-dress and the "snack" is 20 g per 100 - 125 lb. body weight. For example a 1,000 - 1,250 lb. horse would receive 200 g of the supplement per feeding. This feeding rate is equivalent to 1.25 cups (10-oz with a dry-good measuring cup). See chart for specific recommendations.
- Typical feeding rate is 3-4 times per day—top-dressed with each meal and a snack 30-60 minutes prior to a stressful event. Do not feed more than 6 times per day at the recommended rates for your horse's weight.
- Meals of Ultium® Gastric Care Horse Formula or Race Ready® GT Race Horse Formula include Outlast™ Gastric Support Supplement, so each meal will count as one Outlast™ supplement top-dress/snack.

Ingredients

Sun-cured alfalfa, wheat middlings, seaweed-derived calcium, cane molasses, magnesium oxide, citric acid.

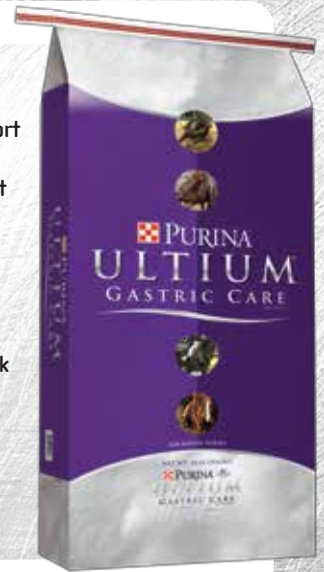
GUARANTEE

Purina appreciates your business. If for any reason you are not satisfied with the quality of this product, please return it to your Purina® Horse Retailer for replacement or a full refund.

Purina® Ultium® Gastric Care horse formula was developed by Purina's PhD Equine Nutritionists and Veterinarians to provide consistent support during times of stress. This feed is the culmination of decades of Purina equine nutrition research, and contains specialized ingredients designed to support a healthy gastric environment and immune system.

Ultium® Gastric Care formula contains:

- A full serving of Purina® Outlast™ supplement to support gastric health and proper pH
- A specialized yeast extract to provide immune support for horses affected by the stress of competition
- Highly digestible fiber sources, including beet pulp, alfalfa meal, and soy hulls, to support an optimal hindgut environment
- Energy to support high-performing horses
- High quality amino acids for a strong topline and quick muscle recovery
- Purina® Amplify® supplement, which includes multiple sources of fatty acids from flaxseed, stabilized rice bran, and vegetable oils to help maintain body condition, healthy hair, coat, and skin



GASTRIC SUPPORT SUPPLEMENT



IMMUNE SUPPORT ADDITIVE

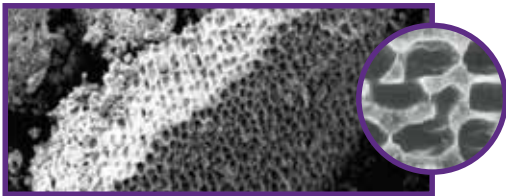


HIGH FAT NUGGET

CONSISTENCY IS KEY

Horses thrive on consistency, but there's nothing consistent about competition: performance schedules are anything but predictable, new neighbors arrive in adjoining stalls, and arenas and environments are constantly changing. This inconsistency can take a toll- affecting health, attitude, and performance. In fact, even common activities including stall confinement, exercise, and transportation are known to cause stress in horses, which may challenge their immune systems and can lead to gastric discomfort.

Purina® Ultium® Gastric Care horse formula helps equine athletes during the stress of competition by providing optimal gastric and immune support.



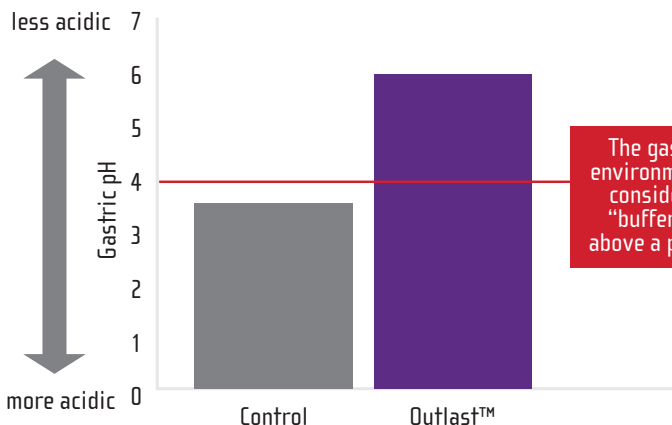
Electron microscope images showing the porous structure of the proprietary mineral complex

Outlast™ supplement contains a proprietary mineral complex with a unique honeycomb structure. The porous structure of this natural and bioavailable source of calcium and magnesium increases its surface area and enhances its capacity to support proper gastric pH.

Purina® Ultium® Gastric Care contains Outlast™ Gastric Support Supplement, which was developed by our Ph.D. Equine Nutritionists to support a healthy gastric environment. Take a look at what makes Outlast™ supplement unique:

Equine gastric pH is less acidic in horses supplemented with Outlast™ supplement

GASTRIC PH 2 HOURS AFTER SUPPLEMENTATION



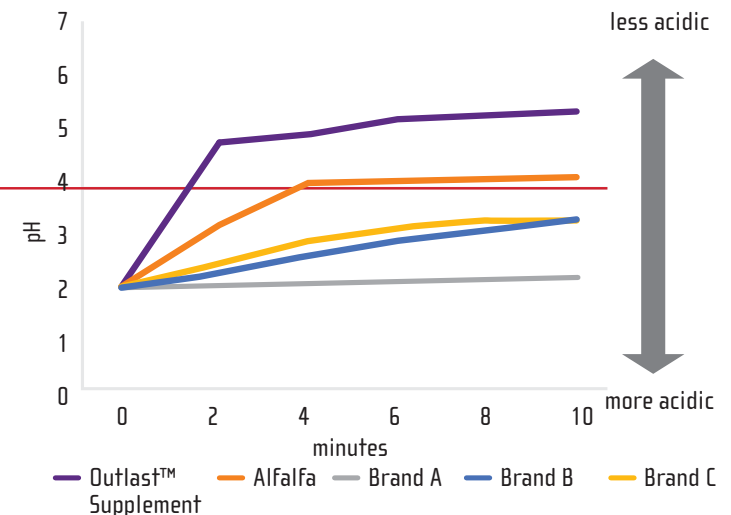
The gastric environment is considered "buffered" above a pH of 4

*The Control supplement and Outlast™ supplement contained similar nutrient profiles.

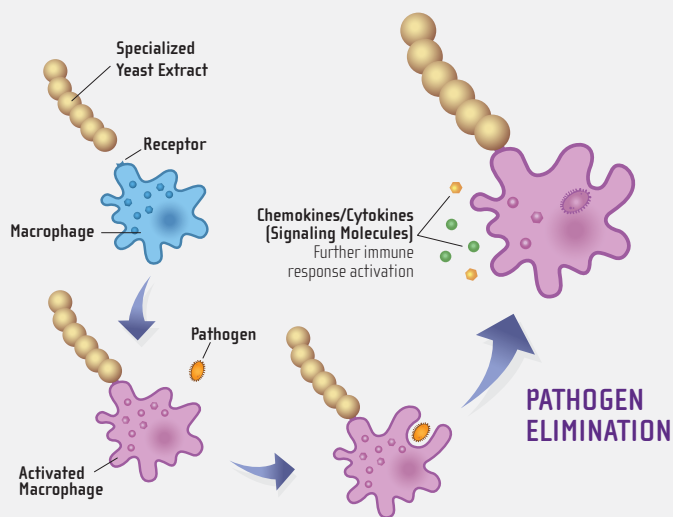
To learn more about the research behind Outlast™ supplement and the Purina® Equine Gastric Health Program, visit www.FeedOutlast.com.

Outlast™ supplement buffers faster and to a higher pH than other products on the market

BUFFERING SPEED IN A SIMULATED GASTRIC ENVIRONMENT



THE SPECIALIZED YEAST EXTRACT WORKS BY ACTIVATING THE IMMUNE SYSTEM TO BE PREPARED FOR CHALLENGES IT WILL INEVITABLY FACE.



Studies show that horses can experience suppressed immune function during times of stress. Research conducted by Purina Animal Nutrition in conjunction with University researchers showed that supplementation with the specialized yeast extract supported immune response during a challenge.

When immune cells bind with the specialized yeast extract, this sets into motion a cascade of events that prime these cells to quickly and efficiently eliminate pathogens (i.e. viruses and bacteria). These primed immune cells are then able to more rapidly respond to pathogen exposure, which is especially beneficial for stressed horses that may already have suppressed immune function.

	WEIGHT OF HORSE IN POUNDS				
	600	800	1000	1200	1400
	(lbs/day)				
Minimum Hay or Equivalent Pasture*	7.00	9.50	12.00	14.50	17.00
	Ultium Gastric Care Horse Feed (lbs/day)**				
Maintenance	2.00	2.75	3.25	4.00	4.50
Elevated Activity					
Light Work	3.00	4.00	5.00	6.00	7.00
Moderate Work	4.25	5.50	6.75	8.00	9.50
Heavy Work	5.25	7.00	8.50	10.25	12.00
Very Heavy Work	7.75	10.25	12.75	15.25	17.75

4 lbs of Ultium® Gastric Care provides 1 full serving of Outlast™ supplement. If feeding less than this amount in one meal, we recommend top-dressing with 100 g (3/4 cup) Outlast™ supplement for optimal buffering.

* This is the recommended minimum amount of hay to be fed. If feeding more hay, reduce the feeding rate of Ultium® Gastric Care Horse Feed by 1.0 lb for every additional 2.0 lbs of hay fed.

** Do not feed less than 0.3 lbs per 100 lbs of body weight per day to meet minimum protein, vitamin and mineral requirements for maintenance. If your horse gains too much weight at that minimum feeding rate, then you should replace Ultium® Gastric Care Horse Formula with a lower calorie Purina® Horse Feed option or Purina® Enrich Plus® Ration Balancing Horse Feed, and supplement with Purina Outlast™ Gastric Support Supplement.

IMPORTANT: For horses sensitive to dietary carbohydrates, please consult with a veterinarian or nutritionist for a recommended diet.

The proprietary ingredients in Ultium® Gastric Care conform to the rules of competition and racing when fed as directed.

CAUTION: Follow label directions: Feeding added selenium at levels in excess of 0.3 ppm in total diet is prohibited. Store in a dry, well-ventilated area protected from rodents and insects. Do not feed moldy or insect-infested feed as it may cause illness or death.

GUARANTEED ANALYSIS

Crude Protein (Min)	12.50 %	Calcium (Ca), (Max)	1.45 %
Lysine (Min)	0.90 %	Phosphorus (P), (Min)	0.60 %
Crude Fat (Min)	10.50 %	Sodium (Min)	0.2%
Crude Fiber (Max)	18.00 %	Sodium (Max)	0.7%
Acid Detergent Fiber (ADF), (Max)	21.00 %	Copper (Cu), (Min)	80.00 ppm
Neutral Detergent Fiber (NDF), (Max)	36.00 %	Selenium (Se), (Min)	0.60 ppm
Starch (Max)	10.00 %	Selenium (Se), (Max)	0.72 ppm
Sugars (Max)	7.00 %	Zinc (Zn), (Min)	280.00 ppm
Calcium (Ca), (Min)	0.95 %	Vitamin A (Min)	3000 IU/LB
		Vitamin E (Min)	125 IU/LB

INGREDIENTS

Wheat Middlings, Dehydrated Alfalfa Meal, Ground Soybean Hulls, Dried Beet Pulp, Soybean Oil, Cane Molasses, Wheat Flour, Stabilized Rice Bran, Vegetable Oil, Oat Hulls, Ground Corn, Seaweed-Derived Calcium, Thiamine Mononitrate, Dehulled Soybean Meal, Flaxseed, Magnesium Oxide, Salt, L-Lysine, Calcium Carbonate, DL-Methionine, Citric Acid, Phosphoric Acid, Dicalcium Phosphate, Monocalcium Phosphate, Propionic Acid [a Preservative], Vitamin E Supplement, Colored with Iron Oxide, Yeast Extract, Rice Hulls, Choline Chloride, Copper Sulfate, Zinc Oxide, Vitamin A Supplement, Vitamin D₃ Supplement, Ferrous Sulfate, Manganous Oxide, Vitamin B₁₂ Supplement, Calcium Iodate, Sodium Selenite, Riboflavin Supplement, Cobalt Carbonate, Calcium Pantothenate, Niacin Supplement, Preserved with Mixed Tocopherols (Form of Vitamin E), Ferrous Carbonate, Rosemary Extract.

PURINA ANIMAL NUTRITION CENTER

Since 1926, the Purina Animal Nutrition Center in Gray Summit, MO has been defining and delivering the future of equine nutrition with a unique philosophy: Combine the finest ingredients with exhaustive research and you'll create unsurpassed nutrition for every type of horse. To learn more, ask your local Purina® feed retailer or sales representative about visiting our Equine Research Facility. Learn more at www.purinamills.com.

GUARANTEE

If you are not completely satisfied with any Purina® horse feed product, please return it to the Purina® retailer where it was purchased for replacement or a full refund. For more information on this or other Purina® horse feeds, visit purinamills.com/horse-feed or call 1-800-227-8941.